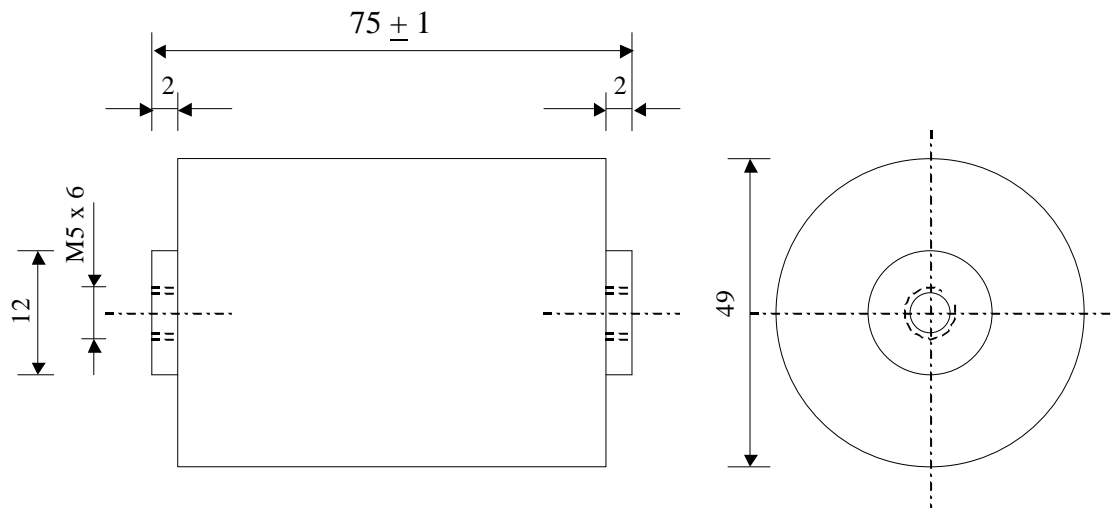


# 5622

## FILM-FOIL CAPACITORS

TYPE  
KP 300-050 dv K

Dielectric of polypropylene - Plastic sleeve

Epoxy resin end sealing - Threaded outputs

Paramètre	Symbol	Value	Unit	Condition
Capacitance	C	500	nF	20°C, 1 kHz
Tolérance		10	%	
Rated voltage	Un DC	3'500	VDC	
Rated voltage	Un AC	400	VAC	50 Hz to 20 kHz
RMS Current	I <sub>eff max.</sub>	25	A <sub>eff</sub>	70°C / 20 kHz
Tangente delta	tgδ	≤ 2.0 E-4		1 V / 10 kHz / 20 °C
Stray inductance	ESL	≤ 20	nH	
Insulation resistance	Ri	> 100'000	MΩ	100 VDC - 1 min
Test voltage between terminals	U T1	6'300	VDC	1 min
Climatic category		25/70/56		

Dimension	Symbole	Value	Unité	Conditions
Diameter	∅	49	mm	
Height	H	75	mm	
Terminals				
Thread		M5 x 6	mm	
	D1	12	mm	

Valeurs indicatives, sous réserve de modification	M2			
	M1			
	M0			
	Modification	Date	Visa émetteur	

Condensateurs CH 1401 Yverdon-les-Bains  
 Kondensatoren Tel.: ++41 24 445 66 88  
 Capacitors Fax: ++41 24 445 66 89

**Le lanché**  
**Capacitors**  
A FISCHER & TAUSSCH COMPANY

HJJ

18.12.2006

faisab5622.XLS