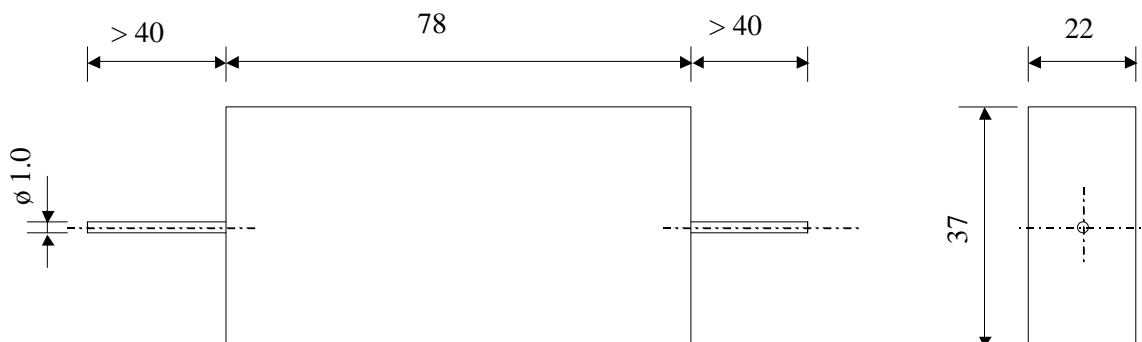


#5647

METALLIZED POLYPROPYLENE CAPACITORS

PPM 1200-275 ru K



Dielectric of metallized polypropylene

Plastic case - resin filled

Parameter	Symbol		Value	Unit	Condition
Capacitance	C		0.0075	μF	1 V / 1 kHz
Tolerance			± 10	%	
Rated voltage	Un DC		12'000	VDC	
Rated voltage	Un AC		6300	VAC	50 Hz
slope of voltage variation	du/dt max.		3000	V/ μsec	max. repetitive
Repetitive surge current	I cr. max		22.5	A	
Tangente delta	tg δ		5	10^{-4}	1 V / 1 kHz
Tangente delta	tg δ		5	10^{-4}	1 V / 10 kHz
Stray inductance	ESL		≤ 150	nH	
Insulation resistance	Ri		$> 100'000$	M Ω	300 VDC - 1 min
Test voltage between terminals	U T1		18'000	VDC	1 min
Climatic category			40/85/56		
Estimated operational life (-3%)			100'000	h	Un DC / 70°C

Dimension	Symbol		Value	Unit	Conditions
Width	B		37 ± 1	mm	
Height	H		22 ± 1	mm	
Length	L		78 ± 1	mm	
Terminals					
Axial tinned wire	d		$\emptyset 1.0 \times 40$	mm	
	M1				
	M0				
	Modification	Date	Visa émetteur		

Condensateurs CH 1400 Yverdon-les-Bains
 Kondensatoren Tel.: ++41 24 445 66 88
 Capacitors Fax: ++41 24 445 66 89

Le lanché
Capacitors
A FISCHER & TAUERCHER COMPANY

HJJ

06.03.2007

faisab5647.XLS